

They are the icebergs
where the circle of
life began.

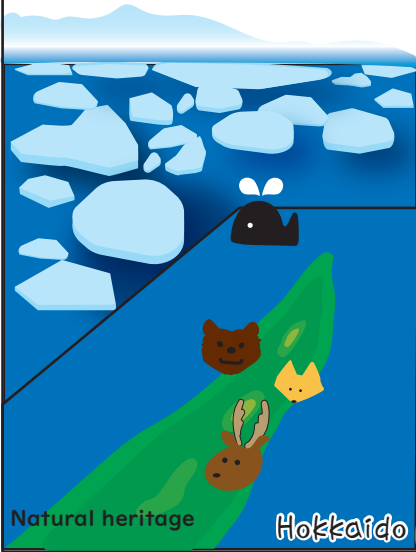
It is the vast
mountainous area with
many beech trees.

It is the temple and
historic remains of
the period when Oshu
Fujiwara prospered.

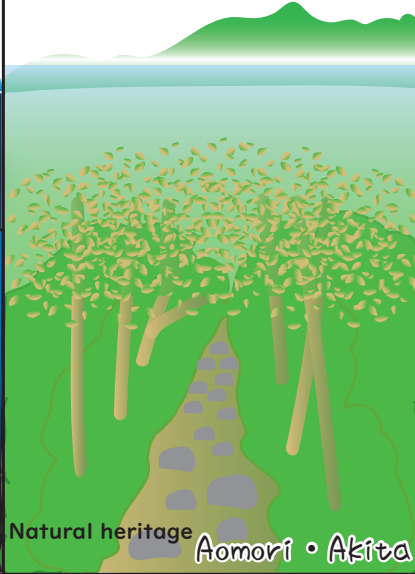
It is the location of
a technological
revolution where mass
production of
raw silk started.

It is a religious
space that is at one
with nature.

Shiretoko



Shirakami-Sanchi



Hiraizumi – Temples, Gardens and Archaeological Sites Representing the Buddhist Pure Land



Tomioka Silk Mill and Related Sites



Shrines and Temples of Nikko

